



Transportation and Environmental Services
Design and Construction
150 Frederick Street, 6th Floor, Kitchener, ON N2G 4J3 Canada
Telephone: 519-575-4400 TTY: 519-575-4608 Fax: 519-575-4430
www.regionofwaterloo.ca

Refer To:

Frank Kosa, 519-575-4757 x3185

File No:

05549.P

Date:

June 8, 2018

Dear Owner/Tenant:

Re: Construction Update Notice

**Franklin Boulevard Improvements – Year 2 South – 170m South of Champlain
Boulevard to 200m South of Main Street, City of Cambridge**

The Region of Waterloo's contractor (Regional Sewer and Watermain - RSW) is nearing completion on the Franklin Boulevard – Year 2 South contract and the intent of this letter is to provide a notice of upcoming closures for surface course paving and line painting.

Currently RSW is completing curb placement and median construction at the Franklin/Dundas roundabout and along the Franklin Blvd. corridor between Main Street and Champlain Blvd along with infilling of base course asphalt. To minimize access disruptions, surface course paving is planned in two separate stages. **Closures are currently planned as follows to facilitate surface course paving and final pavement marking placement:**

- 1. Franklin Blvd. from South of Champlain Blvd. to South of Dundas St.
7am Saturday June 16 for one full day**
- 2. Franklin Blvd. from South of Dundas St. to South of Main St.
7am Saturday June 23 for one full day**

Rain Dates: If it rains on June 16, Closure #1 listed above would take place at 7am on Saturday June 23 and Closure #2 would take place at 7am on Sunday June 24.

Attached to this letter are drawings outlining the proposed closure limits.

Access Restrictions: If you have a residential driveway within either of the closure limits it will not be possible to enter/exit your driveway during paving operations. If you have a need to enter/exit your driveway on the planned paving dates, please contact Regional Sewer and Watermain in advance (contact info below).

If you reside in one of the subdivisions adjacent to the construction zone, you will need to follow alternate routes for access to/from your subdivision on the day of paving.

If you reside in the townhouse complex at Morning Calm Drive, during Closure #1 access to/from the complex will only be available via the emergency access route out to Dundas Street.

If you reside in the Thorneview Co-Op complex, access to/from the complex will be very limited during Closure #1. If you expect that you will need to access to/from the complex during Closure #1, please contact Regional Sewer and Watermain (contact info below), preferably in advance such that prior arrangements can be made.

Access to plazas will be maintained to the extent possible, but there will be periods of time when driveways will require closure. Regional Sewer and Watermain will work to re-open driveways as soon as possible after paving operations in front of those driveways are complete.

Direct contact with site personnel from Regional Sewer and Watermain is preferable for any questions on access or for making any access arrangements in advance. However, you may also contact Frank Kosa or Dylan Mikalski (contact info below) with any other questions or concerns.

Emergency access will be accommodated at all times. Once surface paving and line painting is complete, the roadway and roundabouts will be fully opened to traffic and the project will be complete aside from any outstanding minor deficiencies.

Should you have any questions or concerns regarding construction of this project, please contact one of the following:

For Direct Coordination of Site Specific Works / Access:	For Overall Project Questions:	For Day to Day Construction Issues:
Contractor Site Representative Regional Sewer & Watermain Rob Cherri Cell: 519-404-5725 Emilio Cabral Cell: 519-212-7070	Frank Kosa Sr. Project Manager Region of Waterloo Phone: 519-575-4757 x3185 Cell: 519-580-6004 fkosa@regionofwaterloo.ca	Dylan Mikalski Site Inspector Stantec Cell: 519-500-5159 dylan.mikalski@stantec.com

In the case of after-hour emergencies only, please contact the Regional Service First Call Centre (519) 575-4400.

For GRT detours/stop closures please visit www.grt.ca/en/routesschedules/detours.asp

We thank you for your continued patience and cooperation.

Yours truly,



Frank Kosa, P.Eng.
Senior Project Manager, Transportation Expansion

cc: Marcos Kroker, P. Eng., Head, Transportation Expansion
Penny Evans, Supervisor, Administration & Dispatch Services
Catherine McCall, Supervisor, Administration & Communications (Transportation)
Patricia Heft, Engineering Technologist (Traffic)

**FRANKLIN BLVD CLOSURE
SOUTH OF CHAMPLAIN BLVD
TO SOUTH OF DUNDAS ST**

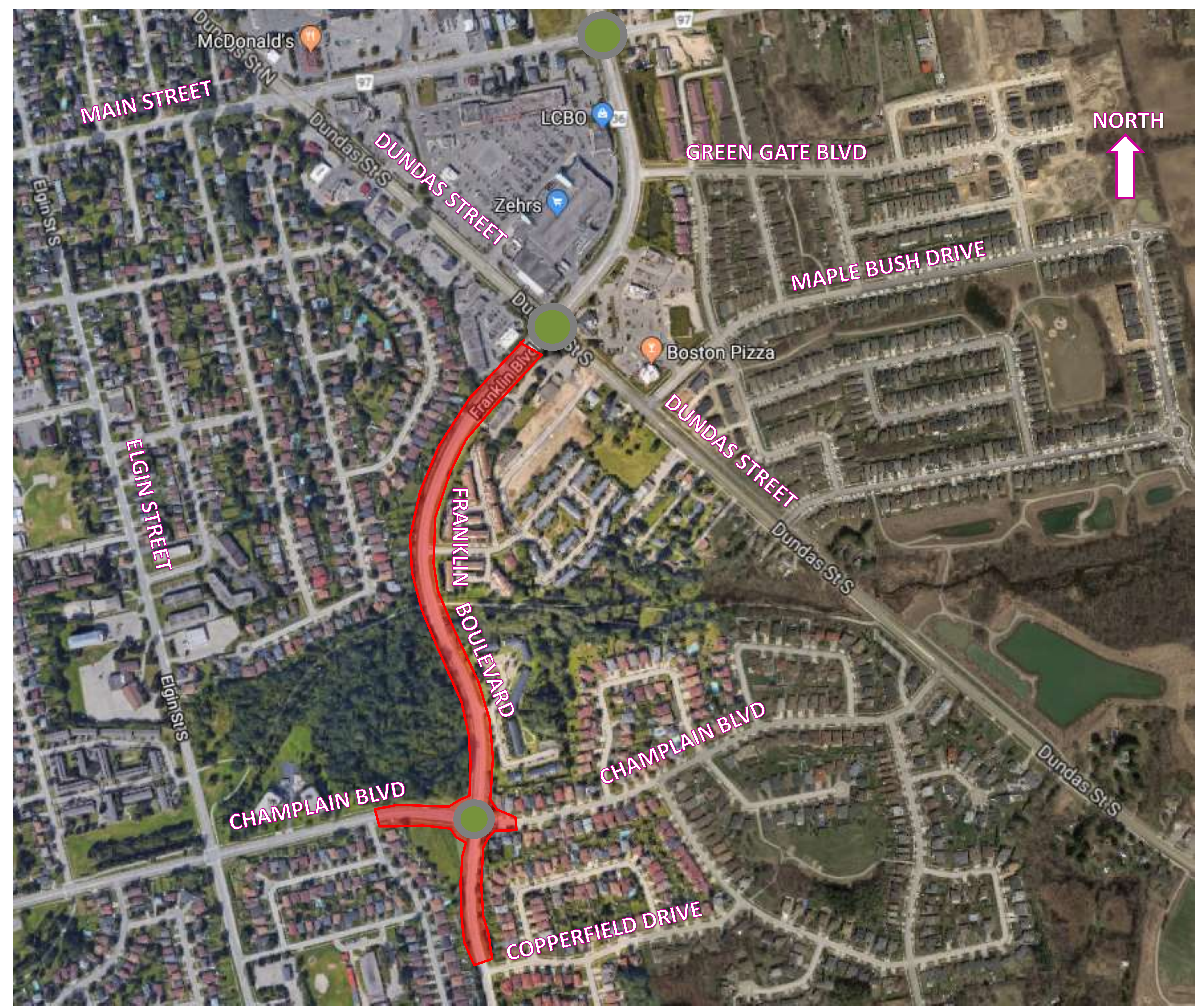
**CLOSURE PLANNED
7AM JUNE 16 FOR ONE DAY
(WEATHER DEPENDENT)**

RAIN DATE: 7AM JUNE 23

LEGEND

 ROAD CLOSED
NO ACCESS

**FOR GRAND RIVER
TRANSIT DETOUR ROUTES
CALL 519-585-7555
OR VISIT
WWW.GRT.CA**



FRANKLIN BLVD CLOSURE
SOUTH OF DUNDAS ST
TO SOUTH OF MAIN ST

CLOSURE PLANNED
7AM JUNE 23 FOR ONE DAY
(WEATHER DEPENDENT)

RAIN DATE: 7AM JUNE 24

LEGEND

ROAD CLOSED
NO ACCESS

FOR GRAND RIVER
TRANSIT DETOUR ROUTES
CALL 519-585-7555
OR VISIT
WWW.GRT.CA

