

To: COUNCIL

Meeting Date: 05/11/2021

Subject: Cambridge Bee City Designation

Submitted By: Michael Hausser, Director of Operations

Prepared By: Paul Willms, Sustainability Planner

Report No.: 21-035(IFS)

File No.: C1101

Recommendation(s)

THAT Council receive report 21-035 (IFS) Cambridge Bee City Designation;

AND THAT Council authorize the Resolution attached as Appendix A be signed by the Mayor and City Clerk and be included in its entirety with the Application;

AND FURTHER THAT Council authorize staff to submit the Bee City Canada Application attached as Appendix B on behalf of the Cambridge Bee City collaborative partnership in support of Cambridge's designation.

Executive Summary

Purpose

- Community organizations are seeking a City Council resolution for the formal endorsement required by Bee City Canada as part of the application process to become designated as a Bee City. The Resolution is provided in Appendix A and recognizes the accomplishments of the past in enhancing biodiversity and creating educational opportunities while setting the stage for collaboration on future projects beneficial to native pollinators.

Key Findings

- Cambridge organizations, in partnership with the City, and including Idea Exchange, Cambridge City Green, Ancient Mariners Canoe Club, *rare* Charitable Research Reserve, Cambridge Self-Help Foodbank, Seeds of Diversity, and Cambridge Butterfly Conservatory have all contributed individually and collaboratively to pollinator habitat creation and education and wish to request

designation by Bee City Canada through an application that requires Council endorsement through a Resolution.

- Bee City designation involves hosting an annual educational event, continuing and developing new projects, and reporting accomplishments to Bee City Canada. It is anticipated that the Cambridge Bee City Committee will also work with the other area municipalities and Region of Waterloo (who are already designated Bee Cities or Bee Region) on the annual event and educational projects.

Financial Implications

- After the first year, a \$500 annual fee as noted in the application (Appendix B) is required to maintain designation following annual reporting to Bee City Canada.
- Funds for the annual Bee City Canada fee, educational and habitat projects, will be derived from the existing Environmental Projects / Cambridge Stewardship / Cambridge City Green budget. It is anticipated that grant applications and collaborative partnerships will contribute funds and in-kind resources for projects and the annual event.

Background

In November 2020, Idea Exchange staff reached out to the City, the members of Waterloo Bee Region, and Cambridge organizations to discuss an application to become designated as a Bee City. Cambridge has an exceptional group of organizations working on habitat creation, awareness and education, citizen science and monitoring around pollinators and the designation would recognize past accomplishments will setting the stage for collaborative projects in the future. Bee City Canada provides a framework for action to benefit pollinators including designation as a Bee City, Bee School, Bee Partner, and Bee Campus. Following designation, Bee Cities are required to report their accomplishments annually and host an educational pollinator event. Bee City Canada is a program of Pollinator Partnership Canada, a federally recognized charitable organization. The Region of Waterloo recently (2019) became designated as a Bee Region as have the Cities of Waterloo and Kitchener. The request of Council is to provide an endorsement of this community-based application through the attached Resolution (Appendix A) and Bee City application. A summary of each Cambridge Bee City Committee organization's accomplishments is provided in the application (Appendix B).

Analysis

Strategic Alignment

PLACE: To take care of, celebrate and share the great features in Cambridge that we love and mean the most to us.

Goal #4 - Environment and Rivers

Objective 4.3 Work with other partners to educate the public and help make changes to improve and protect our natural heritage features.

Bee City Canada designation is consistent with the Strategic Plan's objectives of collaborative partnerships, education and habitat enhancement for the benefit of residents and pollinators.

Comments

The Bee City Canada application (Appendix B) and Resolution (Appendix A) provide for the first time a snapshot of the accomplishments of community organizations involved in biodiversity, community outreach, food security, and pollinator health and monitoring. There are many other organizations in Cambridge including schools, farms, businesses and individuals who are also pursuing projects beneficial to pollinators. The designation will bring together these organizations in collaborative partnerships and set the stage to also work with the broader community of other designated Bee Cities (and Bee Region) on an annual event and projects

Existing Policy/By-Law

There is no existing policy/by-law related to pollinators or the proposed initiative.

Financial Impact

There is an annual Bee City Canada fee (\$500) based on the size of the City of Cambridge, collaborative and ongoing projects that will be funded from approved budget (Environmental Projects account). In-kind and grant contributions will also be sought to leverage funds and capacity for the annual event, new and continuing pollinator habitat planting sites, and educational projects.

Public Input

The Cambridge Bee City Committee is comprised of community organizations and their contributions are documented in the application (Appendix B).

Internal/External Consultation

The Bee Region municipalities and representatives were consulted on the application and the notion of working together on the annual event requirement.

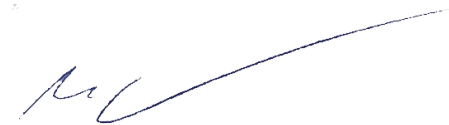
City staff, including the Supervisor of Horticulture, were consulted and are members of the community-based Cambridge Bee City Committee.

Conclusion

Cambridge has a history of exceptional individuals and organizations dedicated to biodiversity, habitat enhancement, monitoring and education as most recently evidenced by the return of bald eagles to our rivers or the Tree Cities of the World acknowledgement. The Bee City Canada designation builds on this tradition and will make Cambridge a better place to live for residents and native pollinators alike.

Signature

Division Approval



Name: Michael Hausser

Title: Director of Operations

Reviewed by the CFO

Reviewed by Legal Services

Departmental Approval



Name: Yogesh Shah

Title: Deputy City Manager Infrastructure Services

City Manager Approval

A handwritten signature in black ink that reads "David Calder". The signature is written in a cursive, flowing style.

Name: David Calder

Title: City Manager

Attachments

- Appendix A – Council Resolution
- Appendix B – Bee City Canada Application

APPENDIX A – Bee City Canada Resolution

WHEREAS pollinators around the world have experienced dramatic declines due to land fragmentation, habitat loss, pesticides use, industrialized agriculture, climate change, and the spread of pests and diseases, with serious implications for the future health of flora, fauna, and the security of our food system;

WHEREAS the goal of a Bee City Canada designation is to promote healthy, sustainable habitats and communities for pollinators;

WHEREAS the designation is consistent with the City of Cambridge Strategic Plan environment, parks, and community engagement goals and objectives;

WHEREAS community organizations and individual residents have a strong tradition of developing educational, native plant, and monitoring projects that has resulted in awareness, enhanced natural areas, citizen science capacity, and increased interactions and collaboration among community stewards;

WHEREAS the designation will endorse the past efforts of the collaborative partners, highlight their ongoing initiatives, and set the stage for new projects and participants to join in making Cambridge a better place; and,

WHEREAS the designation will allow the City of Cambridge and collaborative partners to work together on an annual event and joint educational projects with the Bee Region consisting of the Region of Waterloo, area municipalities, and community partners.

NOW, THEREFORE BE IT RESOLVED

THAT the City of Cambridge Council commits to the standards of the Bee City Canada Program and that staff be authorized to submit the Bee City Canada Application on behalf of the Cambridge Bee City collaborative partnership.

Read, approved and adopted this

_____ day of _____, 20_____.

Cambridge
Municipality

Kathryn McGarry, Mayor

Danielle Manton, City Manager



Bee City Canada Application

A) City or Community Information

Municipality/First Nation City of Cambridge

Province/Territory Ontario

Mayor, Chief or Chair of Commission

Name & Title Kathryn McGarry, Mayor, City of Cambridge

Name of Applicant & Title Paul Willms, Sustainability Planner, City of Cambridge

Organization or Department Park Operations Division–Infrastructure Services
Department

Address Cambridge City Hall, P.O. Box 669, 50 Dickson Street

City/First Nation Cambridge **Province/Territory** Ontario

Postal Code N1R 5W8

Email willmsp@cambridge.ca **Phone** (519) 740-4681, ext. 4262

Bee City Liaison & Title Paul Willms, Sustainability Planner

Organization or Department City of Cambridge

Address Cambridge City Hall, P.O. Box 669, 50 Dickson Street

City/First Nation Cambridge **Province/Territory** Ontario

Postal Code N1R 5W8

Email willmsp@cambridge.ca **Phone** (519) 740-4681, ext. 4262

Please list the members of your Bee City Pollinator Team. This group will oversee the Bee City program. (Expand or reduce table as required)

| Cambridge Bee City Committee | | |
|---|---|--|
| Name | Affiliation | Email |
| Paul Willms | City of Cambridge | willmsp@cambridge.ca |
| Nathan Lantz | City of Cambridge | lantzn@cambridge.ca |
| Emma Campbell | Idea Exchange | ecampbell@ideaexchange.org |
| Crystal Paravinja | Idea Exchange | cparavinja@ideaexchange.org |
| Beth Lanigan | Idea Exchange | blanigan@ideaexchange.org |
| Tina Runstedler | Idea Exchange | trunstedler@ideaexchange.org |
| Jim Dyer | Ancient Mariners Canoe Club / Cambridge Pollinator Preserve | jamesdyer@sympatico.ca |
| Taryn Jarvis | rare Charitable Research Reserve | Taryn.Jarvis@raresites.org |
| Siobhan Bonisteel-Topping | Cambridge Self-Help Food Bank | sbonisteel@cambridgefoodbank.on.ca |
| Linda Simpson | Cambridge City Green | linda@galtmassage.ca |
| Friends of the Cambridge Bee City Committee | | |
| Bob Wildfong | Seeds of Diversity | bob@seeds.ca |
| Adrienne Brewster | Cambridge Butterfly Conservatory | Bee City Canada Partner organization; technical support and advice |
| Members of the Waterloo Bee Region including the current members and their respective pollinator committees from the City of Waterloo, City of Kitchener, Region of Waterloo and Townships of Woolwich and Wellesley whom the Cambridge Bee City Committee will collaborate on annual event and awareness projects. | | |

Media Contact (if not Applicant)

Name & Title Susanne Hiller, Director of Communications

Department Office of the City Manager, City of Cambridge

Email HillerS@cambridge.ca **Phone** (519) 623-1340 x.4831

Tell us about any initiatives currently taking place in your city, community or region which protect pollinators. These may include existing pollinator gardens, habitat restoration projects, efforts to reduce or eliminate the use of pesticides and public education activities to raise awareness about pollinators.

The members of the Cambridge Bee City Committee have implemented pollinator education, habitat creation, and monitoring projects for almost two decades. Some initiatives mentioned below were completed in the past but many are ongoing and will therefore also be featured in the next section (Commitments and Actions). Many of the initiatives below are collaborative projects involving more than one Cambridge Bee City Committee member or other organizations/individuals in the community.

City of Cambridge

- The City stopped pesticide use on City properties prior to former Region of Waterloo Pesticides by-law (2005) and current Provincial regulations banning cosmetic pesticides.
- The City propagates many flowering plants in its greenhouse and maintains beds and gardens throughout the City. Design choices consider the use of pollinator friendly plants and areas are planted to encourage bee and butterfly habitat. Some examples include the Soper Park gardens; an oak savannah project featuring mostly prairie herbaceous grasses and flowers in Victoria Park; the Craig's Crossing Pedestrian Bridge project native plantings; the Hespeler pumping station project that featured native seed mixes.
- The City has been a partner with Horticultural Societies, Cambridge City Green and the Cambridge Stewardship planting project, schools, Ancient Mariners Canoe Club, and other organizations in their efforts to bring native wildflowers that support pollinators to various locations in Cambridge as well as hosting educational events at City Hall.



Cambridge City Green

- Cambridge City Green is a group of volunteers that has existed since 1993 to encourage environmental projects in Cambridge and leverage volunteer action with the call to action of “Be the Change...” Members plan various initiatives and engage over 100 community partners and 3,000 – 6,000 volunteers annually in projects such as the Cambridge Community Clean Up, Jane’s walk, City Green Workshops and Cambridge Stewardship planting events. City Green has contributed to various pollinator habitat and education projects including the *Bee the Change* Workshop, *Monarchs and Milkweed* Workshop, Coronation Public School pollinator garden, Hespeler Public School native plantings, and Ancient Mariners Canoe Club Cambridge Pollinator Preserve. The Cambridge Stewardship project has



Cambridge City Green “*Bee the Change*” workshop



Planting Coronation Public School Pollinator Garden

established over 12,000 native stems (5,500 trees, 4,500 wildflowers, 2000 shrubs) representing over 175 native species at over 100 volunteer planting events with 3500 volunteers at 30 sites across the city.



Making Bee Hotels

Cambridge Self-Help Food Bank

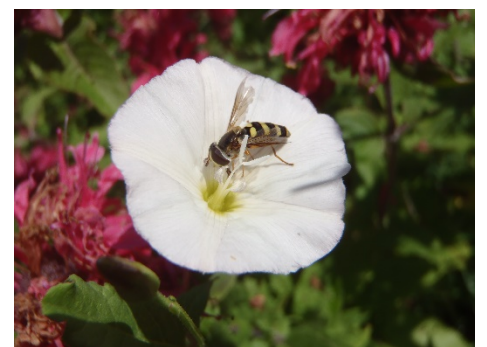
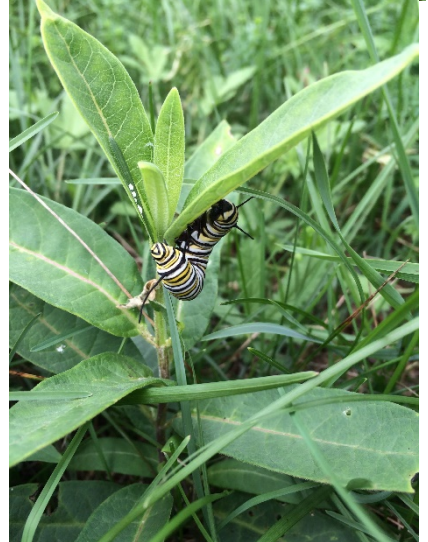
- The Cambridge Self-Help Food Bank works in partnership with 5 local gardens to grow fresh food for those in need. These gardens produce approximately 10,000 lbs. a year of fresh open pollinated food for those who live and work in poverty. We work hard to be pollinator friendly by not using any pesticides in these gardens and through the planting of pollinator friendly plants. We also use our work in gardens as teaching tools about the importance of local food in supporting pollinators, biodiversity, and vulnerable populations. This includes working with the *rare* Charitable Research Reserve and Seeds of Diversity Canada to offer seed saving workshops and other pollinator activities to our participants and the broader community. We also highlight the importance of

pollinators in the food system through our internal programming. This includes making essential links between pollinators and food in our cooking programs. We want our participants to not only develop food skills that go from seed to fork but to also understand the linkages of food to ecological systems, poverty, and community development.



rare Charitable Research Reserve

- over 1000 acres of land being preserved intact in perpetuity
- 3 acre Community Garden that includes garden plots for growing vegetables, herbs, berries, fruit trees and flowers
- village meadow of native flowering plants behind our main office
- rain garden with native flowering plants
- native plant gardens at 1679 Blair Rd, 768 Blair Rd, 681 Blair Rd
- Butterfly Loop walking trail with interpretive signage specific to pollinators
- Savvas Chamberlain Family Pollinator Conservatory
- education programs for all ages (ECO camp, guided walks, public workshops)
- butterfly research conducted by *rare* staff annually
- *rare* hosts an annual butterfly count every July
- hosts a spring plant sale where we sell native plants
- hosts a Seedy Saturday with free handouts of native plant seeds
- expanding our Native Plant Propagation Program with a new, dedicated greenhouse being built



Ancient Mariners Canoe Club Cambridge Pollinator Preserve at Riverbluffs Park

- In 2009 the Ancient Mariners Canoe Club (AMCC) began their habitat restoration project, the Cambridge Pollinator Preserve (CPP), on two acres of flood plain along the Grand River in Riverbluffs Park. This eco-friendly pollinator habitat is maintained by the AMCC.
- AMCC members have carried out annual volunteer planting days since 2009 to establish a diverse community of native flowering vegetation that provides floral forage for pollinators, free of pesticides. As well as biodiversity, the wide variety of plant selections serves to identify those plants that are best suited to the soil and microclimate of the site.



The second goal of the CPP was to help the public learn about the critical role and plight of pollinators. To fulfill this role a five-panel Education Centre was opened to the public in 2012. A portable copy of these panels has allowed the CPP experience to be shared at many regional public events. Numerous groups have visited the CPP to learn about observing pollinators and creating pollinator habitat. As the oldest pollinator habitat project in operation in the region, the CPP is an important benchmark for habitat projects.

- AMCC has hosted two high profile public events at the CPP: the dedication of the Education Centre in 2012 and the 10th Year Anniversary Celebration of CPP Operation in 2019. Both events were attended by local politicians, city officials and other important players in the regional pollination conservation scene. These two successful events demonstrate the potential of the CPP as a venue for future Pollinator Week celebrations.



Idea Exchange

- The Preston branch has a small pollinator garden. This was planted with assistance from Reep Green Solutions to select native plants that attract pollinators. Our pollinator garden is located within our community vegetable garden where we host many of our youth and family programs throughout Spring, Summer and Fall. The pollinator garden offers great habitat as well as great opportunities to educate members of our community on native plants and the importance of protecting and attracting pollinators.



**Community Planting Day, 2017
Preston Idea Exchange**



- Our Preston branch has a community seed library that is entirely reliant on donations. Since our launch in 2015 we have accepted any vegetable, flower and herb seed donations that have come from the community. However, our goal for the future is to limit our flower donations to accepting only native, non-invasive flowering plants. This will be an education project where we can teach the community about which plants are native to our area. And this will encourage habitat creation within our city as more residents take seeds and plant them in their gardens.

- We host school tours and in 2018 we created a garden field trip tour at our Preston branch that is targeted at Grade 3 students that focuses on the parts of plants, the

needs of plants, different ways that plants are grown for food and the ways in which plants and animals depend on each other (e.g. bees and pollination). The tour includes an interactive game to help students learn how pollination occurs with bees. In 2018 and 2019 we had 274 local students participate in this tour. In our school tour the students have an opportunity to use saved seeds that have been donated to our seed library. They learn about seed saving and each student gets to plant a flower seed to take back to school/home. By limiting our focus to native and non-invasive flowering plants in our seed library, the students on this school tour will also be playing a role in habitat creation in our city. We will be expanding the tour to be offered at all Idea Exchange locations in Cambridge and to include an optional add-on where the teacher can choose to have the class plant more than one native, non-invasive flowering plant each (for example if they would like to start a pollinator garden at their school).



**New pollinator garden seedlings,
2020
Preston Idea Exchange**

B) Yearly Renewal Fees

There are no fees on the initial application. The fees below apply on the yearly renewal.

| | |
|--------------------------------|--------|
| Less than 5000 population | FREE |
| 5000 – 10,000 population | \$150 |
| 10,001 – 25,000 population | \$200 |
| 25,001 – 50,000 population | \$300 |
| 50,0001 – 100,000 population | \$400 |
| 100,001 – 250,000 population | \$500 |
| 250,001 – 500,000 population | \$750 |
| 500,001 – 1,000,000 population | \$1000 |
| + 1,000,000 – population | \$1500 |

C) Commitments and Actions

I/we, the undersigned, understand that the Bee City Canada program consists of three commitments, and we will take the indicated actions to support those commitments:

1. **Creating Biodiversity in Pollinator Habitats:** Describe your plans to create, improve and maintain pollinator habitat, while reducing or eliminating pesticide use.
 - The City of Cambridge will explore new pollinator habitats in parks and natural areas in partnership with community organizations and City Green's Cambridge Stewardship project.
 - The Ancient Mariners Canoe Club will continue to plant and maintain the Cambridge Pollinator Preserve at Riverbluffs Park.
 - *rare* Charitable Research Reserve will continue to maintain and expand various pollinator and native plant projects on its lands.
 - The Idea Exchange will continue to maintain its pollinator garden
 - The Cambridge Self-Help Food Bank will continue the important work in local gardens while expanding to include more garden partners that will grow food for those in need in ecologically friendly ways, which both support pollinators and vulnerable people. We also are working to build deeper relationships with local growers and farmers that produce food for people in need while too eliminating industrial chemicals used in large food production which is harmful to pollinators. We also run a city-wide gleaning program that promotes back yard fruit growing without the use of herbicide and pesticides.
 - The Cambridge Bee City Committee will coordinate an annual event and awareness project(s) with the Region of Waterloo Bee Region partners
2. **Educating the public about the importance of pollinators:** Describe how you plan to educate residents, city staff and others about the importance of pollinators and what people can do to protect them.
 - The Cambridge Bee City Committee members will continue their respective education programs and projects to provide the general public with seeds, information, and opportunities to expand pollinator habitat projects on public as well as private lands. The Cambridge Bee City Committee members participate in various events with their pollinator displays and educational materials through programs with schools as well as for the general public (e.g. **Idea Exchange Earth**

Day event). Bee City Canada signs may be installed as appropriate at various pollinator gardens throughout the city. The Cambridge Self-Help Food Bank will educate participants on the importance of fresh food grown in pollinator friendly ways through our programming and when we share food at our facility. We will also educate the public more broadly, mainly through our social media channels and as poverty advocates at the municipal level, regarding the importance of healthy food grown for those in need while not harming ecological systems.

3. **A yearly commitment to celebrate:** Describe the cities plan to celebrate

pollinators during International Pollinator Week (third week of June).

- The Cambridge Bee City Committee members host their respective events (e.g. *rare* Charitable Research Reserve and Idea Exchange Seedy Saturday native plant seed events). The Cambridge Self-Help Food Bank will host garden opening celebrations at the beginning of each season and events throughout the summer. During Pollinator Week we will focus our workshops and internal cooking programs on the importance of pollinators and their role in our food system. We also have a Children's Wellness Hub which plans to highlight pollinators in our children's activities during Pollinator Week.
- The Cambridge Bee City Team will join designated Bee City Canada municipalities and partners in the Region of Waterloo and plan an annual event and has already been in touch to indicate our desire to collaborate.

4. **Briefly discuss your cities long term pollinator strategy.** How will your cities

landscape change in the next year? In the next 5 years?

- In the next year Cambridge Bee City Committee members plan on introducing the public to their respective ongoing projects to create awareness, appreciation and capacity for others to join.
- The Cambridge Bee City Committee will explore landscape change opportunities including:
 1. Explore new potential pollinator garden sites, or additions of native plants for native pollinators at tree planting project sites through City Green's Cambridge Stewardship project.
 2. Expand the Ancient Mariners Canoe Club Cambridge Pollinator Preserve by adding new cells of native plants and flowering native trees each year.
 3. Distribution of native seeds (Idea Exchange, rare Charitable Research Reserve) for additional habitat in residential areas.

4. Collaboration with Region of Waterloo Bee Region members on awareness projects.

5. Please provide a 50 to 100 word write up on what it means to be a Bee City.

We will share this exciting news through our social media outlets.

The Cambridge Bee City designation gave us a chance to look back at what we've accomplished and look forward to the future of pollinator possibilities. We've changed the landscape by establishing thousands of native plants, we have organizations providing a variety of educational and citizen science opportunities to all ages, and in the near future we'll collaboratively do great things for pollinators and the community as a Bee City! We recently saw bald eagles return to our local watersheds and now look forward to the Monarch and native pollinators coming back and contributing to Cambridge's biodiversity.

D) Other Requirements

I/we, the undersigned agree to:

1. Publicly display Bee City Canada designation through signs, city/region/community website and other means.
2. To annually report to Bee City Canada. A renewal form and an invoice for applicable fees will be emailed one month prior to renewal date.

E) Requested Attachments

With your completed application, please provide:

1. Your city, region or First Nation logo (png format) and any usage guidelines.
2. Any photos you would like us to share on social media. This could include pollinator gardens, public events, etc.

- **City logo and photos provided as separate files**



F) Signatures

A handwritten signature in black ink that reads 'Paul Willms'.

Paul Willms

Print Name

Sustainability Planner

Title

April 14, 2021

Date

Bee City Canada Liaison (if not Applicant)

Signature

Print Name

Title

Date

G) Next Steps

1. (Applicant) Email completed application and resolution (in PDF format) with requested attachments to applications@beecitycanada.org with "APPLICATION" in the subject line.
2. (Bee City Canada) Your application will be reviewed within three business days. We will notify you as soon as your application has been approved or promptly request any clarification, if necessary.

H) Bee City Canada's Commitment

Bee City Canada is committed to publicizing your designation as a Bee City through our website, social media and other channels. In addition, our "Bee City Welcome Package" will be sent to you and will include an official Declaration, recognizing your city or First Nation as a Bee City.

Bee City Canada is grateful for your commitment to take positive actions to help pollinators and for being a role model for other communities across Canada.